

LED VIDEO WALL BEZEL FREE



CCC/ISO9001/ROHS/FCC/CE/CB

- 1080 4K Full HD
- 178 Viewing Angle
- Tempered Glass
- LED Backlight
- 0mm Bezel
- 100,000 Hours Long Lifespan
- Temperature Control
- All in one Control

USER®

PROFESSIONAL LED Intelligent & Interactive display solutions



China National high-tech enterprise certification recipient

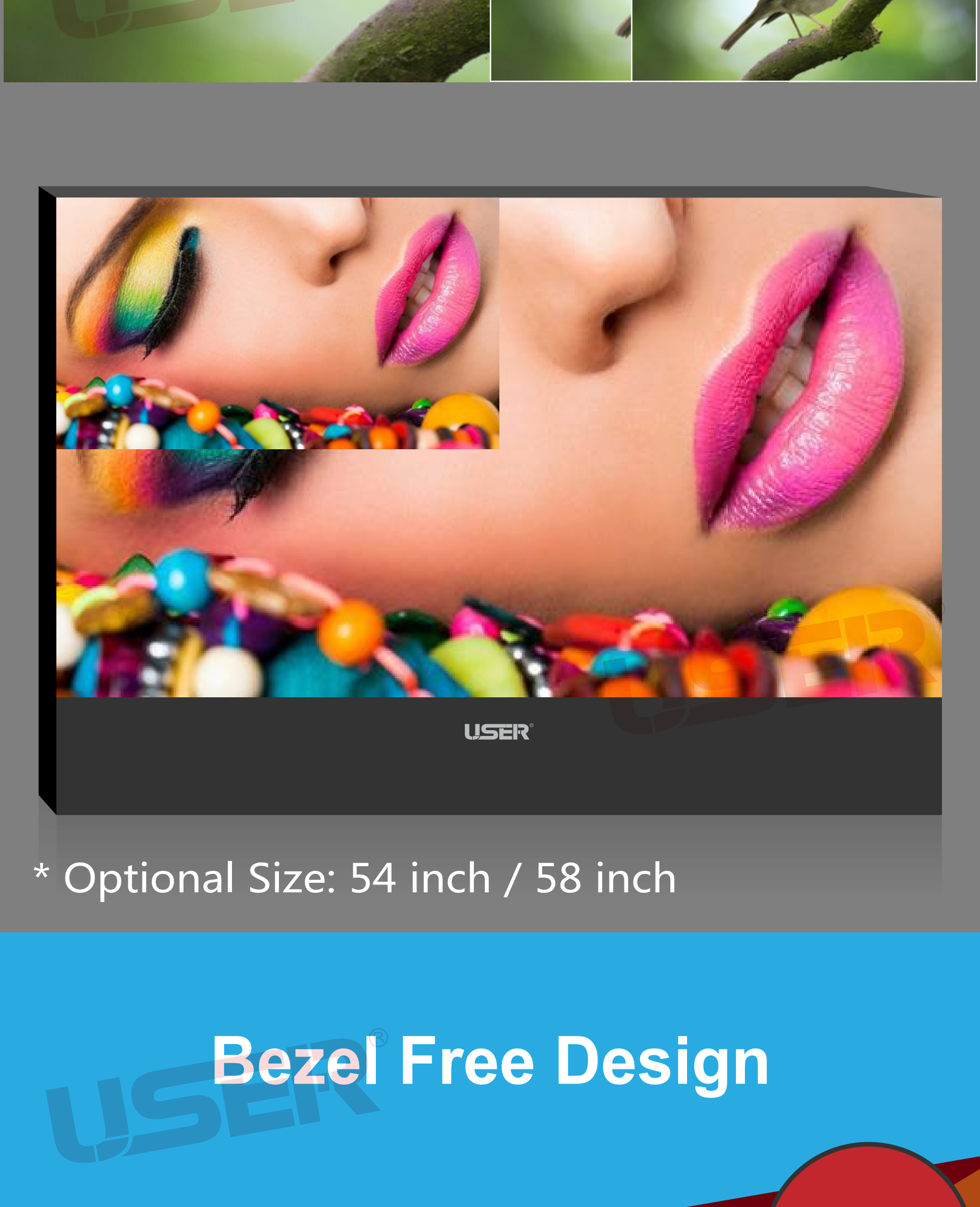


USER® R&D CAPABILITY

| Design Patent | R&D Team | Patent Certificates | High-Tech | Technical Support |
|--|--|---|--|--|
| We have obtained multiple patents for LED solution designs | USER has a world class R&D department, which is constantly innovating. | Obtained many LED monitor design patents certificates | We are a National High-Tech enterprise always achieving new standards. | Product Appearance Design Product Configuration Main board design Service and Maintenance |

Ultra High Definition

It delivers a truly amazing picture with extraordinary pixels producing an image that is HD quality in an LED Screen.

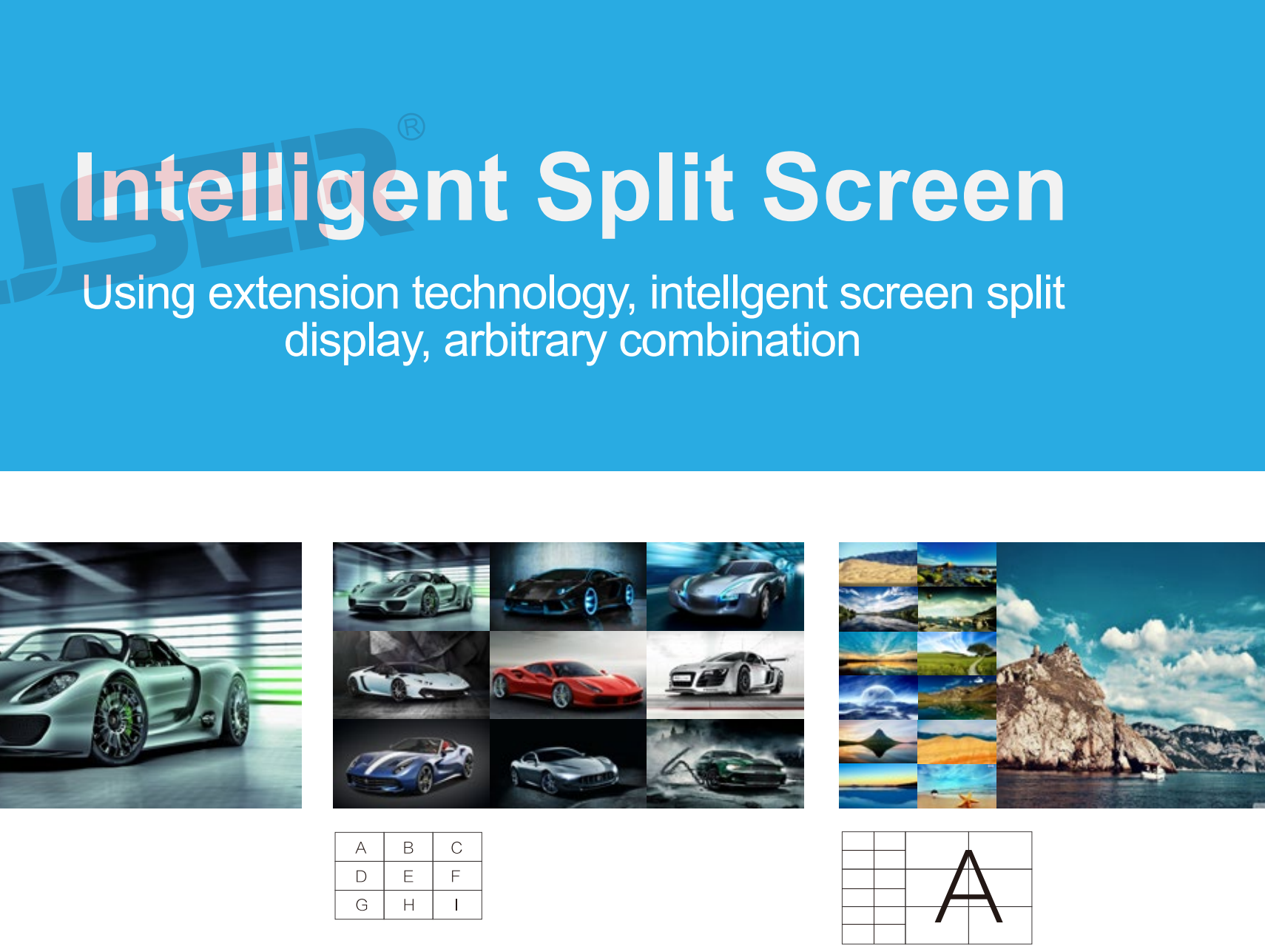
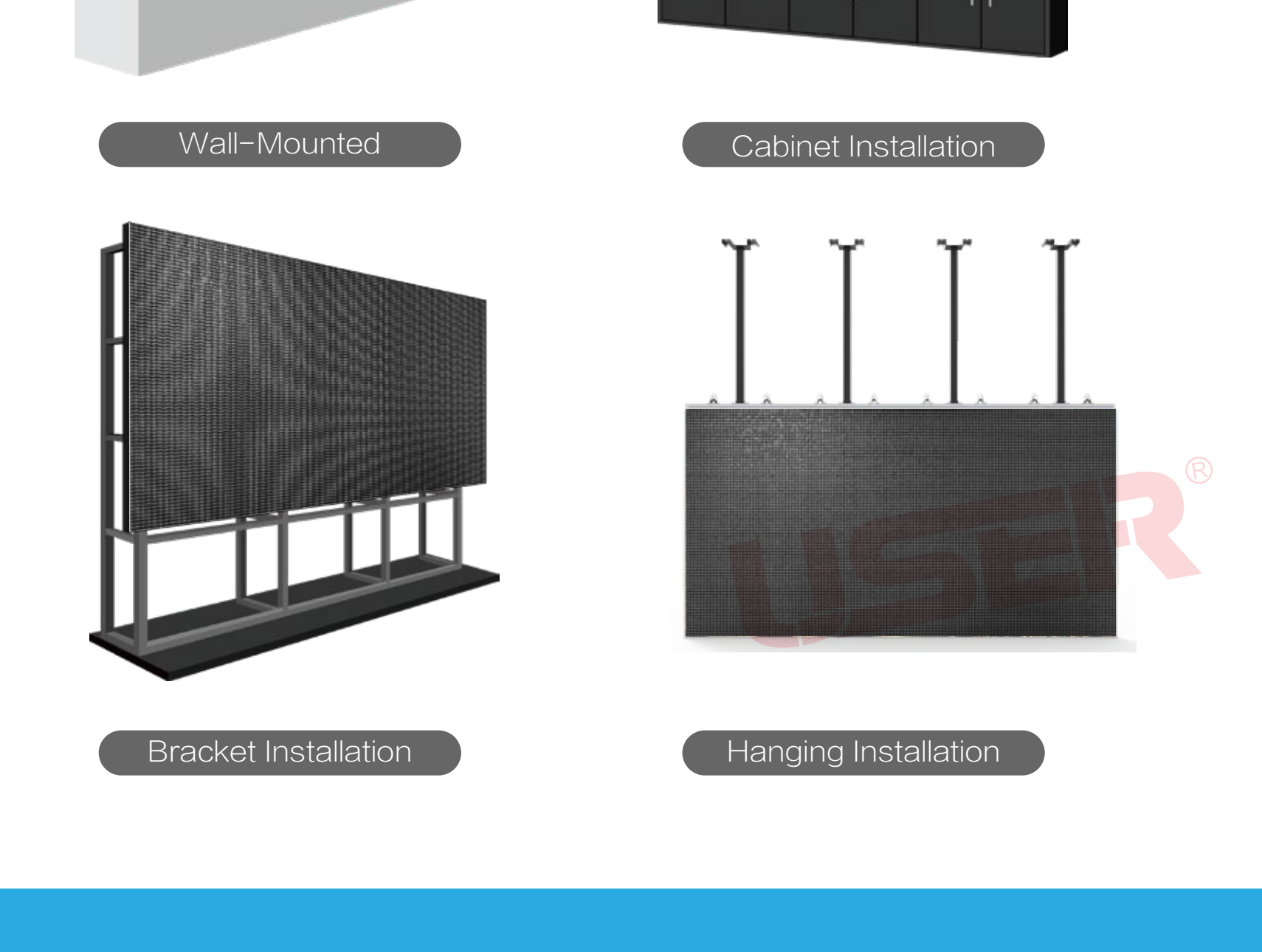


* Optional Size: 54 inch / 58 inch

Bezel Free Design

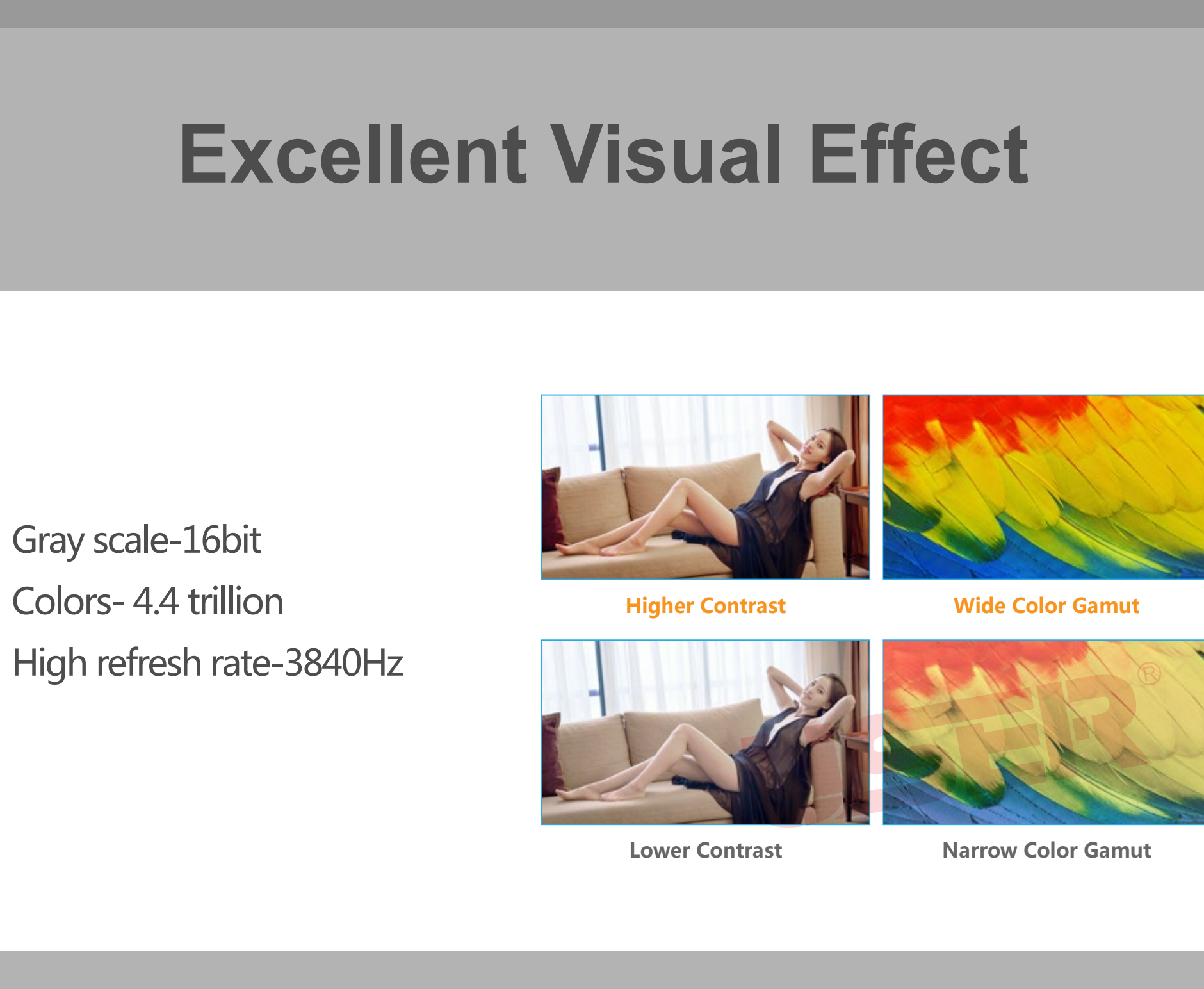


Module Combination Design Front Maintenance / Front Installation



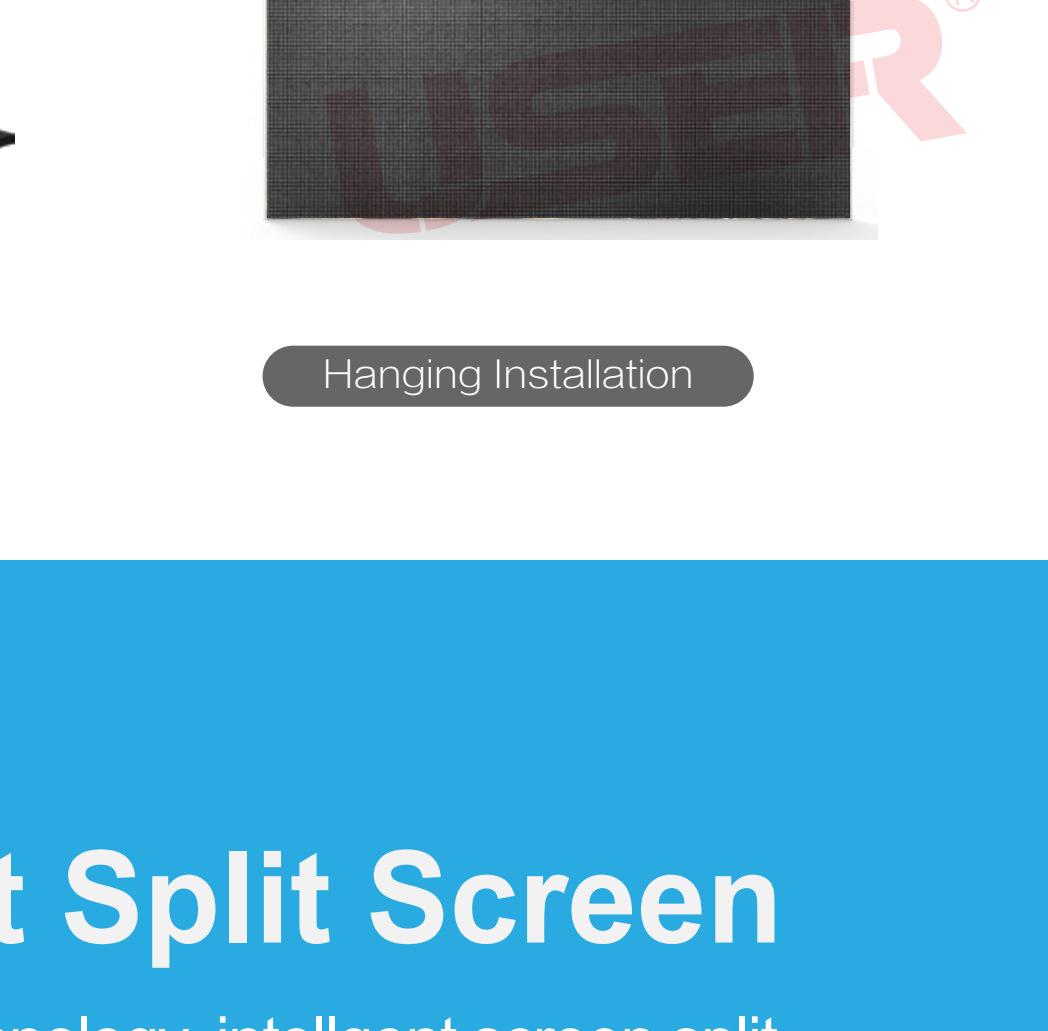
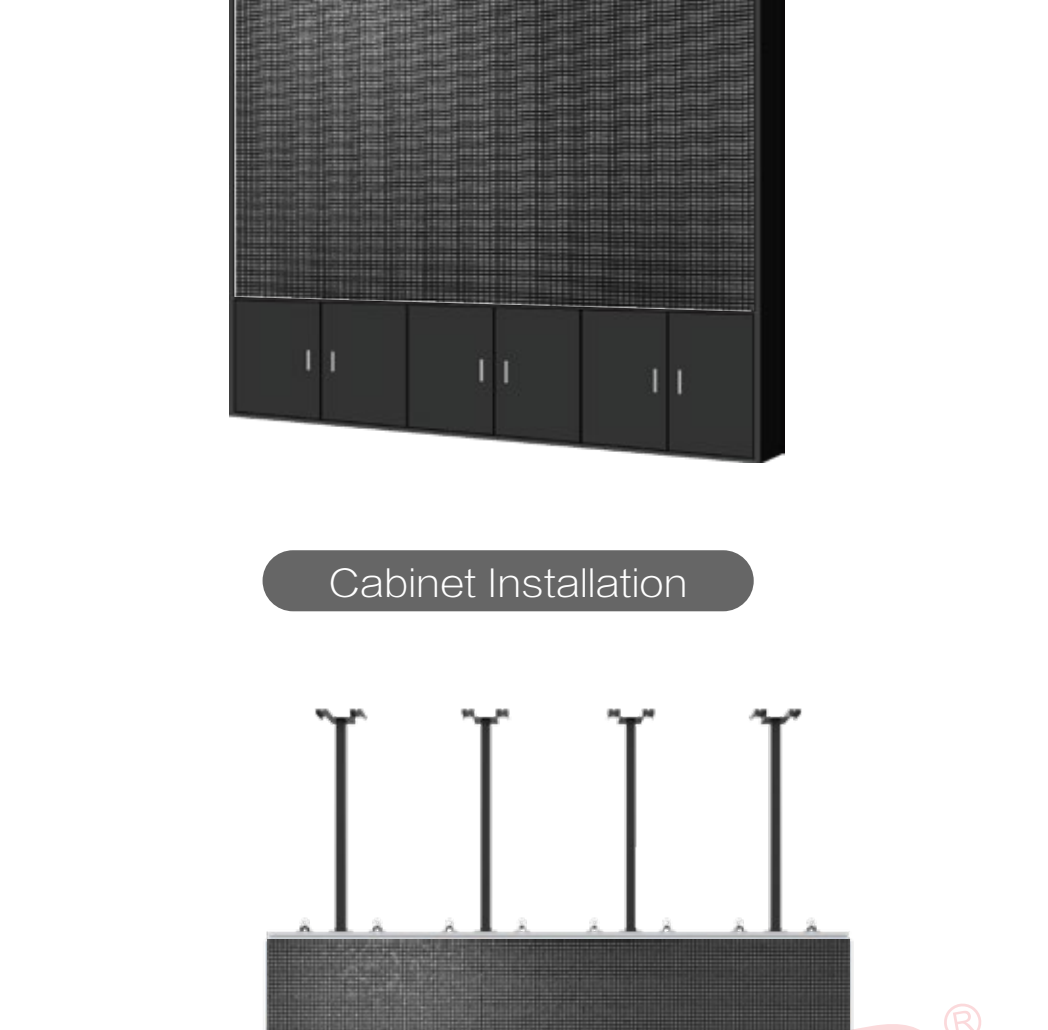
Ultra Wide Viewing Angle

Both 178° from horizontal & vertical for the viewing angle. Seeing from multi directions, it would be still the natural and clear image in an LED display

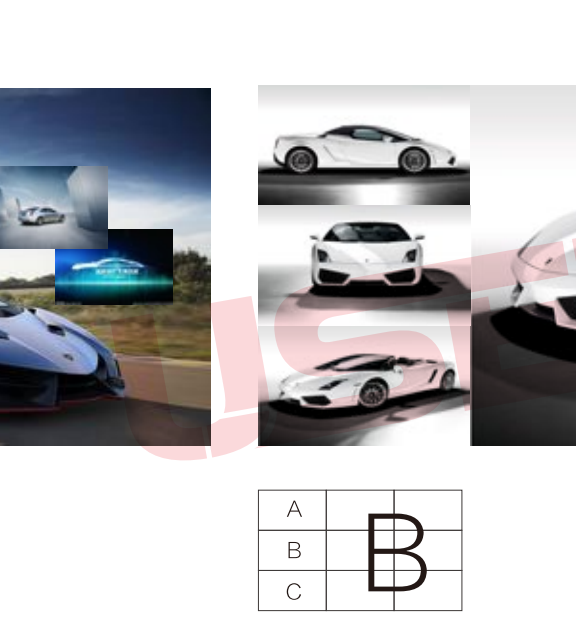
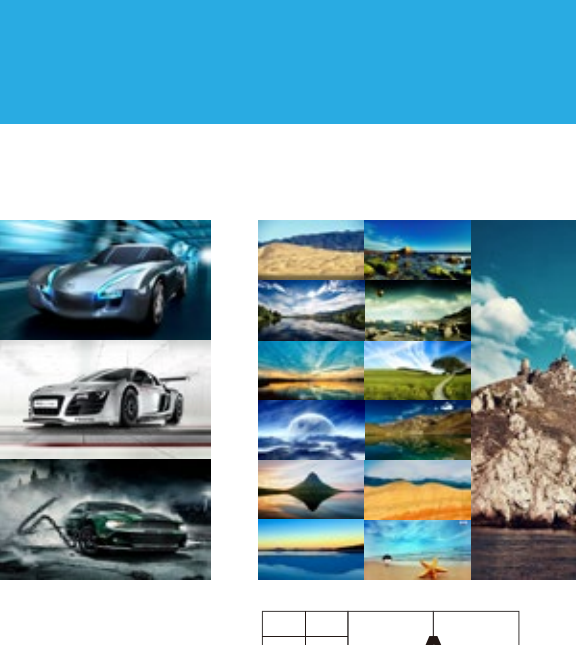
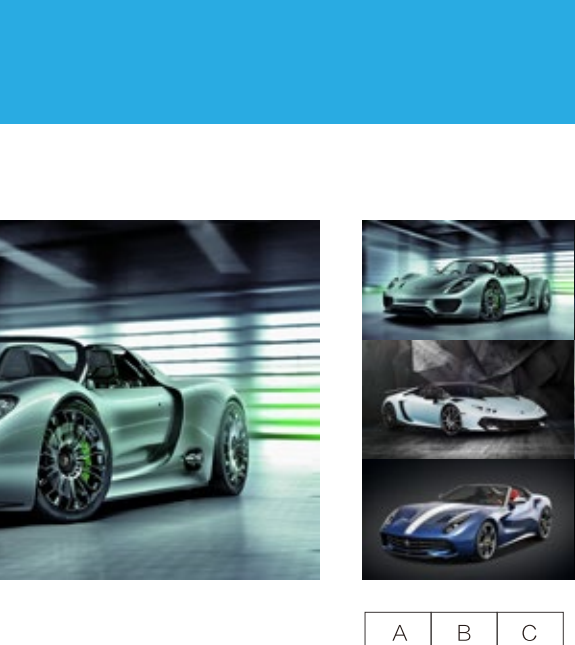


Excellent Visual Effect

- Gray scale-16bit
- Colors- 4.4 trillion
- High refresh rate-3840Hz



Multiple Install Methods



Wall-mounted Cabinet Installation Bracket Installation Hanging Installation

Intelligent Split Screen

Using extension technology, intelligent screen split display, arbitrary combination



Size Multi-angle Icons

| Specification | 54" | | | |
|--------------------------|---|-----------|-----------|-----------|
| | M54-P0.9 | M54-P1.2 | M54-P1.5 | M54-P1.8 |
| Installation Environment | Indoor | | | |
| Cabinet Size | 1200MM × 675MM × 31.5MM | | | |
| Pixel Pitch (mm) | P0.9375 | P1.25 | P1.5625 | P1.875 |
| Scanning Mode | 60 | 54 | 48 | 32 |
| IC | ICND2065 | ICND2065 | ICND2065 | ICND2065 |
| Packaging Method | MINI | SMD1010 | SMD1212 | SMD1515 |
| Cabinet Resolution | 1280 × 720 | 960 × 540 | 768 × 432 | 640 × 360 |
| Refresh Rate | 3840Hz | 3840Hz | 3840Hz | 3840Hz |
| Brightness | 500nits | 600nits | 800nits | 800nits |
| IP Level | IP30 | | | |
| Receiving Card | A9S | A5S | | |
| Maintenance Method | Front Maintenance | | | |
| Installation Method | Hanging, Bracket, Wall-mounted, Cabinet | | | |

| Specification | 58" | | | | |
|--------------------------|---|------------|-----------|-----------|-----------|
| | M58-P1.0 | M58-P1.2 | M58-P1.6 | M58-P1.8 | M58-P2.0 |
| Installation Environment | Indoor | | | | |
| Cabinet Size | 1280MM × 720MM × 44MM | | | | |
| Pixel Pitch (mm) | P1.0 | P1.25 | P1.667 | P1.818 | P2.0 |
| Scanning Mode | 60 | 48 | 54 | 50 | 45 |
| IC | ICND2065 | ICND2065 | ICND2065 | ICND2065 | ICND2065 |
| Packaging Method | MINI | SMD1010 | SMD1212 | SMD1515 | SMD1515 |
| Cabinet Resolution | 1280 × 720 | 1024 × 576 | 768 × 432 | 704 × 396 | 640 × 360 |
| Refresh Rate | 3840Hz | 3840Hz | 3840Hz | 3840Hz | 3840Hz |
| Brightness | 500nits | 600nits | 800nits | 800nits | 1000nits |
| IP Level | IP30 | | | | |
| Receiving Card | A9S | A5S | | | |
| Maintenance Method | Front Maintenance | | | | |
| Installation Method | Hanging, Bracket, Wall-mounted, Cabinet | | | | |